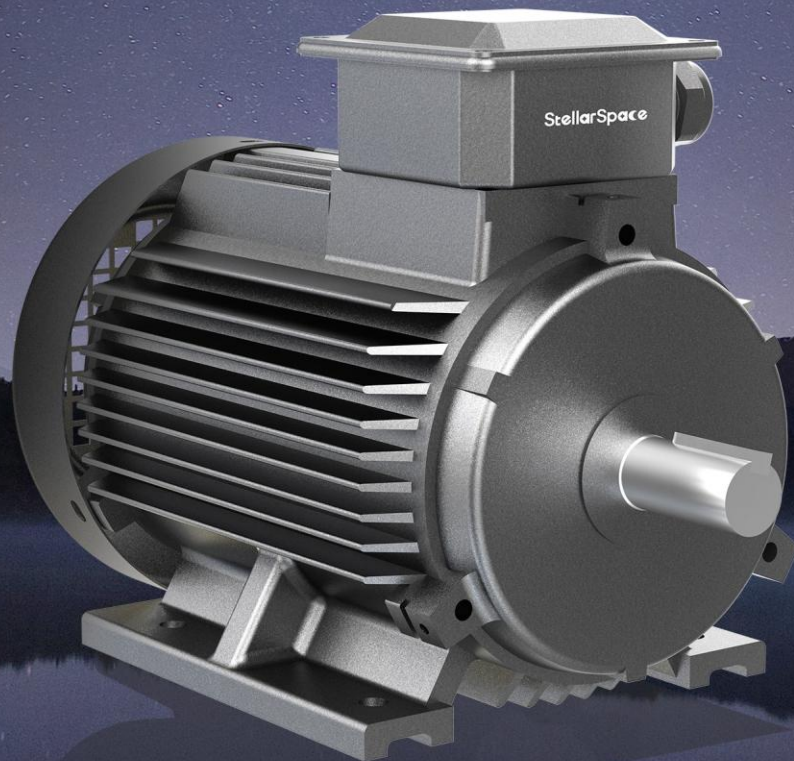


StellarSpace

High-Efficiency PMSM



About StellarSpace

StellarSpace is a high-tech innovator founded by a core team from Tsinghua University, specializing in motion control algorithms and embodied core control systems. Built on advanced control technologies, we deliver an integrated architecture across the control, drive, and execution layers—enabling the next generation of industrial intelligence.

With a global vision, StellarSpace provides a full portfolio of PLCs, VFDs, HMIs, servo systems, and industrial motors. Our products are widely applied in emerging strategic industries, traditional industrial upgrading, and high-end equipment manufacturing. Leveraging the strong technical expertise of its Tsinghua-based team, StellarSpace deeply integrates advanced motion control algorithms with embodied core control systems into its offerings, providing customers with more intelligent, precise, and forward-looking application-oriented solutions.

StellarSpace is committed to advancing global industrial development and becoming an innovator in industrial civilization.

Technology highlights



Higher Energy Efficiency

Compliant with GB Level 1 efficiency standards and featuring a permanent magnet synchronous design, it delivers up to 30% more efficient operation than traditional asynchronous motors—especially in variable.



More Compact Design

Over 30% smaller in size compared to conventional asynchronous motors, reducing machine footprint and maximizing space utilization —ideal for compact installations.



Lighter Weight

At least 30% lighter than standard asynchronous models, making installation easier and cutting transportation costs. Particularly beneficial for applications where the motor moves with the system, enhancing overall motion efficiency.



Smarter, Safer Operation

Supports intelligent protection features such as AI-enhanced thermal protection, enabling adaptive performance based on real-time operating conditions. In abnormal scenarios, the system responds immediately to ensure safety and stability.

Typical industries and applications



Healthcare



Printing



Wind turbine



Food and beverage



Metal



Automotive



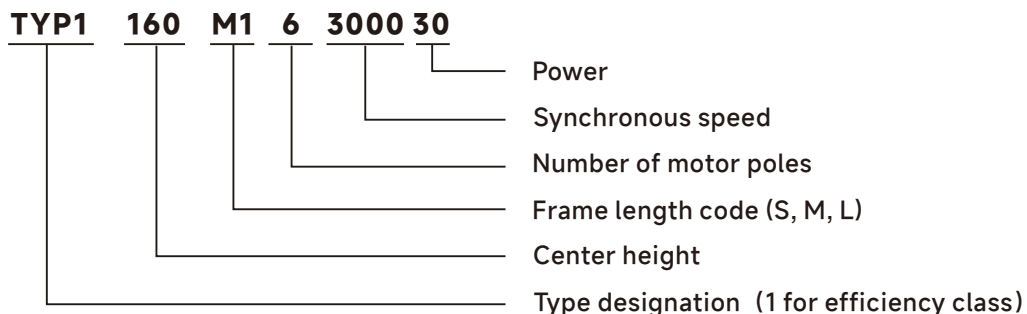
Water and wastewater



Logistics

Ordering information

Ordering information



Mounting arrangements

Five Basic Configuration Types

- ◆ B3: Foot-mounted
- ◆ B5: Flange-mounted, flange with through holes
- ◆ B35: Foot- and flange-mounted, flange with through holes
- ◆ B34: Foot- and flange-mounted, flange with threaded holes
- ◆ B14: Flange-mounted, flange with threaded holes

Compliant with IEC 60034-7

Mounting arrangements	B3					
Positioning	B3	B6	B7	B8	V5	V6
Diagram						
Center height	80~355	80~160				
Mounting arrangements	B5			B35		
Positioning	B5	V1	V3	B35	V15	V36
Diagram						
Center height	80~280	80~355	80~160	80~355	80~160	
Mounting arrangements	Flange-mounted, small flange					
Positioning	B14		B34		V18	
Diagram						
Center height	80~112					

Configuration Information

Bearing type

Motor size	D-end		N-end	
	2P	4/6/8P	2P	4/6/8P
H80	6204-2RS/C3		6204-2RS/C3	
90	6205-2RS/C3		6205-2RS/C3	
100	6206-2RS/C3		6206-2RS/C3	
112	6206-2RS/C3		6206-2RS/C3	
132	6208-2RS/C3		6208-2RS/C3	
160	6309/C3		6309/C3	
180	6311/C3		6311/C3	
200	6312/C3		6312/C3	
225	6312/C3	6313/C3	6312/C3	6313/C3
250	6314/C3		6314/C3	
280	6316/C3		6316/C3	
315	6316/C3	6319/C3	6316/C3	6319/C3
355	6319/C3	6322/C3	6319/C3	

Terminal box

Motor size	Size of threads		
	Main		Auxiliary
	Standard	Nonstandard	
TYP1-80-90	M24×1.5	M25×1.5	
TYP1-100	M24×1.5	M32×1.5	
TYP1-112-132	2-M30×2	2-M32×1.5	
TYP1-160-180	2-M36×2	2-M40×1.5	M16×1.5
TYP1-200-225	2-M48×2	2-M50×1.5	M16×1.5
TYP1-250-280	2-M64×2	2-M63×1.5	M20×1.5
TYP1-315	2-M64×2	2-M63×1.5	M20×1.5
TYP1-315(M, L)	2-M72×2	2-M63×1.5	M20×1.5
TYP1-355(1, 2)	2-M72×2	2-M72×2	M20×1.5

Technical specifications

High-Efficiency PMSM 3000r/min

Type	Power (kw)	Rated current (A)	Rated frequency (Hz)	Rated speed (r/min)	Efficiency (%)	Power factor	Rated torque (N.m)	Pull-out Torque	Cooling method
TYP1-90S-6-3000	1.5	2.6	150	3000	90.9	0.95	4.8	1.8	IC411
TYP1-90L-6-3000	2.2	3.8	150	3000	91.8	0.95	7.0	1.8	IC411
TYP1-100L-6-3000	3	5.2	150	3000	92.6	0.95	9.6	1.8	IC411
TYP1-112M-6-3000	4	6.8	150	3000	93.3	0.95	12.7	1.8	IC411
TYP1-132S1-6-3000	5.5	9.3	150	3000	94.5	0.95	17.5	1.8	IC411
TYP1-132S2-6-3000	7.5	12.7	150	3000	94.5	0.95	23.9	1.8	IC411
TYP1-160M1-6-3000	11	18.5	150	3000	95.0	0.95	35.0	1.8	IC411
TYP1-160M2-6-3000	15	25.1	150	3000	95.3	0.95	47.8	1.8	IC411
TYP1-160L-6-3000	18.5	30.9	150	3000	95.6	0.95	58.9	1.8	IC411
TYP1-180M-6-3000	22	36.6	150	3000	95.9	0.95	70.0	1.8	IC411
TYP1-200L1-6-3000	30	49.8	150	3000	96.1	0.95	95.5	1.8	IC411
TYP1-200L2-6-3000	37	61.3	150	3000	96.3	0.95	117.8	1.8	IC411
TYP1-225M-6-3000	45	74.5	150	3000	96.4	0.95	143.3	1.8	IC411
TYP1-250M-6-3000	55	90.9	150	3000	96.5	0.95	175.1	1.8	IC411
TYP1-280S-6-3000	75	123.8	150	3000	96.6	0.95	238.8	1.8	IC411
TYP1-280M-6-3000	90	148.4	150	3000	96.7	0.95	286.5	1.8	IC411
TYP1-315S-6-3000	110	181.2	150	3000	96.8	0.95	350.2	1.8	IC411
TYP1-315M-6-3000	132	217.3	150	3000	96.9	0.95	420.2	1.8	IC411
TYP1-315L1-6-3000	160	263.1	150	3000	97.0	0.95	509.3	1.8	IC411
TYP1-315L2-6-3000	200	328.2	150	3000	97.2	0.95	636.7	1.8	IC411
TYP1-355M-6-3000	250	410.2	150	3000	97.2	0.95	795.8	1.8	IC411
TYP1-355L-6-3000	315	516.9	150	3000	97.2	0.95	1002.8	1.8	IC411

Technical specifications

High-Efficiency PMSM 1500r/min

Type	Power (kw)	Rated current (A)	Rated frequency (Hz)	Rated speed (r/min)	Efficiency (%)	Power factor	Rated torque (N.m)	Pull-out Torque	Cooling method
TYP1-80M1-8-1500	0.55	1.0	100	1500	85.6	0.95	3.5	1.8	IC411
TYP1-80M2-8-1500	0.75	1.4	100	1500	85.6	0.95	4.8	1.8	IC411
TYP1-90S-8-1500	1.1	2.0	100	1500	87.4	0.95	7.0	1.8	IC411
TYP1-90L-8-1500	1.5	2.7	100	1500	88.1	0.95	9.6	1.8	IC411
TYP1-100L1-8-1500	2.2	3.9	100	1500	89.7	0.95	14.0	1.8	IC411
TYP1-100L1-8-1500	3	5.3	100	1500	90.3	0.95	19.1	1.8	IC411
TYP1-112M-8-1500	4	7.0	100	1500	90.9	0.95	25.5	1.8	IC411
TYP1-132S-8-1500	5.5	9.5	100	1500	92.1	0.95	35.0	1.8	IC411
TYP1-132M-8-1500	7.5	12.9	100	1500	92.6	0.95	47.8	1.8	IC411
TYP1-160M-8-1500	11	18.7	100	1500	93.6	0.95	70.0	1.8	IC411
TYP1-160L-8-1500	15	25.5	100	1500	94.0	0.95	95.5	1.8	IC411
TYP1-180M-8-1500	18.5	31.3	100	1500	94.3	0.95	117.8	1.8	IC411
TYP2-180L-8-1500	22	37.1	100	1500	94.7	0.95	140.1	1.8	IC411
TYP1-200L-8-1500	30	50.4	100	1500	95.0	0.95	191.0	1.8	IC411
TYP1-225S-8-1500	37	61.9	100	1500	95.3	0.95	235.6	1.8	IC411
TYP1-225M-8-1500	45	75.1	100	1500	95.6	0.95	286.5	1.8	IC411
TYP1-250M-8-1500	55	91.6	100	1500	95.8	0.95	350.2	1.8	IC411
TYP1-280S-8-1500	75	124.6	100	1500	96.0	0.95	477.5	1.8	IC411
TYP1-280M-8-1500	90	149.2	100	1500	96.2	0.95	573.0	1.8	IC411
TYP1-315S-8-1500	110	180.9	100	1500	97.0	0.95	700.3	1.8	IC411
TYP1-315M-8-1500	132	216.8	100	1500	97.1	0.95	840.4	1.8	IC411
TYP1-315L1-8-1500	160	262.5	100	1500	97.2	0.95	1018.7	1.8	IC411
TYP1-315L2-8-1500	200	327.5	100	1500	97.4	0.95	1273.3	1.8	IC411
TYP1-355M-8-1500	250	409.4	100	1500	97.4	0.95	1591.7	1.8	IC411
TYP1-355L-8-1500	315	515.8	100	1500	97.4	0.95	2005.5	1.8	IC411

Technical specifications

High-Efficiency PMSM 1000r/min

Type	Power (kw)	Rated current (A)	Rated frequency (Hz)	Rated speed (r/min)	Efficiency (%)	Power factor	Rated torque (N.m)	Pull-out Torque	Cooling method
TYP1-80M1-8-1000	0.55	1.0	66.7	1000	85.9	0.95	5.3	1.8	IC411
TYP1-90S-8-1000	0.75	1.4	66.7	1000	87.4	0.95	7.2	1.8	IC411
TYP1-90L-8-1000	1.1	2.0	66.7	1000	88.7	0.95	10.5	1.8	IC411
TYP1-100L-8-1000	1.5	2.7	66.7	1000	89.9	0.95	14.3	1.8	IC411
TYP1-11 2M-8-1000	2.2	3.9	66.7	1000	90.9	0.95	21.0	1.8	IC411
TYP1-132S-8-1000	3	5.2	66.7	1000	91.8	0.95	28.7	1.8	IC411
TYP1-132M1-8-1000	4	6.9	66.7	1000	92.7	0.95	38.2	1.8	IC411
TYP1-132M2-8-1000	5.5	9.4	66.7	1000	93.4	0.95	52.5	1.8	IC411
TYP1-160M-8-1000	7.5	12.7	66.7	1000	94.0	0.95	71.6	1.8	IC411
TYP1-160L-8-1000	11	18.6	66.7	1000	94.5	0.95	105.1	1.8	IC411
TYP1-180L-8-1000	15	25.2	66.7	1000	94.9	0.95	143.3	1.8	IC411
TYP1-200L1-8-1000	18.5	31.0	66.7	1000	95.3	0.95	176.7	1.8	IC411
TYP1-200L2-8-1000	22	36.7	66.7	1000	95.6	0.95	210.1	1.8	IC411
TYP1-225M-8-1000	30	49.9	66.7	1000	95.8	0.95	286.5	1.8	IC411
TYP1-250M-8-1000	37	61.5	66.7	1000	96.0	0.95	353.4	1.8	IC411
TYP1-280S-8-1000	45	74.6	66.7	1000	96.2	0.95	429.8	1.8	IC411
TYP1-280M-8-1000	55	91.1	66.7	1000	96.3	0.95	525.3	1.8	IC411
TYP1-315S-8-1000	75	124.1	66.7	1000	96.4	0.95	716.3	1.8	IC411
TYP1-315M-8-1000	90	148.7	66.7	1000	96.5	0.95	859.5	1.8	IC411
TYP1-315L1-8-1000	110	181.6	66.7	1000	96.6	0.95	1050.5	1.8	IC411
TYP1-315L2-8-1000	132	217.5	66.7	1000	96.8	0.95	1260.6	1.8	IC411
TYP1-355M1-8-1000	160	263.3	66.7	1000	96.9	0.95	1528.0	1.8	IC411
TYP1-355M2-8-1000	200	328.8	66.7	1000	97.0	0.95	1910.0	1.8	IC411
TYP1-355L-8-1000	250	411.1	66.7	1000	97.0	0.95	2387.5	1.8	IC411

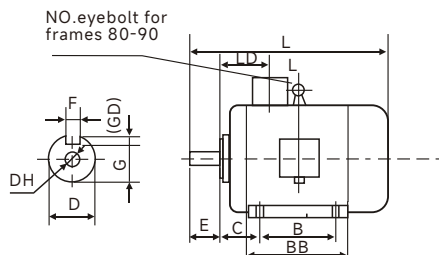
Technical specifications

High-Efficiency PMSM 750r/min

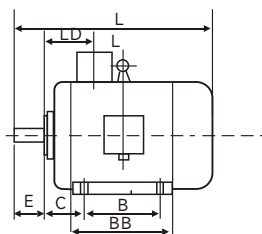
Type	Power (kw)	Rated current (A)	Rated frequency (Hz)	Rated speed (r/min)	Efficiency (%)	Power factor	Rated torque (N.m)	Pull-out Torque	Cooling method
TYP1-90L-8-750	0.55	1.1	50	750	80.6	0.95	7.0	1.8	IC411
TYP1-100L1-8-750	0.75	1.5	50	750	82.0	0.95	9.6	1.8	IC411
TYP1-100L2-8-750	1.1	2.1	50	750	84.0	0.95	14.0	1.8	IC411
TYP1-112M-8-750	1.5	2.8	50	750	85.5	0.95	19.1	1.8	IC411
TYP1-132S-8-750	2.2	4.0	50	750	87.2	0.95	28.0	1.8	IC411
TYP1-132M-8-750	3	5.4	50	750	88.4	0.95	38.2	1.8	IC411
TYP1-160M1-8-750	4	7.1	50	750	89.4	0.95	50.9	1.8	IC411
TYP1-160M2-8-750	5.5	9.7	50	750	90.4	0.95	70.0	1.8	IC411
TYP1-160L-8-750	7.5	13.1	50	750	91.3	0.95	95.5	1.8	IC411
TYP1-180L-8-750	11	19.0	50	750	92.2	0.95	140.1	1.8	IC411
TYP1-200L-8-750	15	25.8	50	750	92.9	0.95	191.0	1.8	IC411
TYP1-225S-8-750	18.5	31.6	50	750	93.3	0.95	235.6	1.8	IC411
TYP1-225M-8-750	22	37.5	50	750	93.6	0.95	280.1	1.8	IC411
TYP1-250M-8-750	30	50.8	50	750	94.1	0.95	382.0	1.8	IC411
TYP1-280S-8-750	37	62.5	50	750	94.4	0.95	471.1	1.8	IC411
TYP1-280M-8-750	45	75.8	50	750	94.7	0.95	573.0	1.8	IC411
TYP1-315S-8-750	55	92.4	50	750	94.9	0.95	700.3	1.8	IC411
TYP1-315M-8-750	75	125.5	50	750	95.3	0.95	955.0	1.8	IC411
TYP1-315L1-8-750	90	150.3	50	750	95.5	0.95	1146.0	1.8	IC411
TYP1-315L2-8-750	110	183.3	50	750	95.7	0.95	1400.7	1.8	IC411
TYP1-355M1-8-750	132	219.5	50	750	95.9	0.95	1680.8	1.8	IC411
TYP1-355M2-8-750	160	265.5	50	750	96.1	0.95	2037.3	1.8	IC411
TYP1-355M1-8-750	200	331.2	50	750	96.3	0.95	2546.7	1.8	IC411
TYP1-355M2-8-750	250	414	50	750	96.3	0.95	3183.3	1.8	IC411

Installation and dimensions

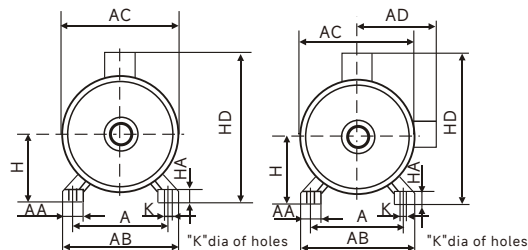
IM B3 H80-355



Frame size
H80-132



Frame size
H160-355



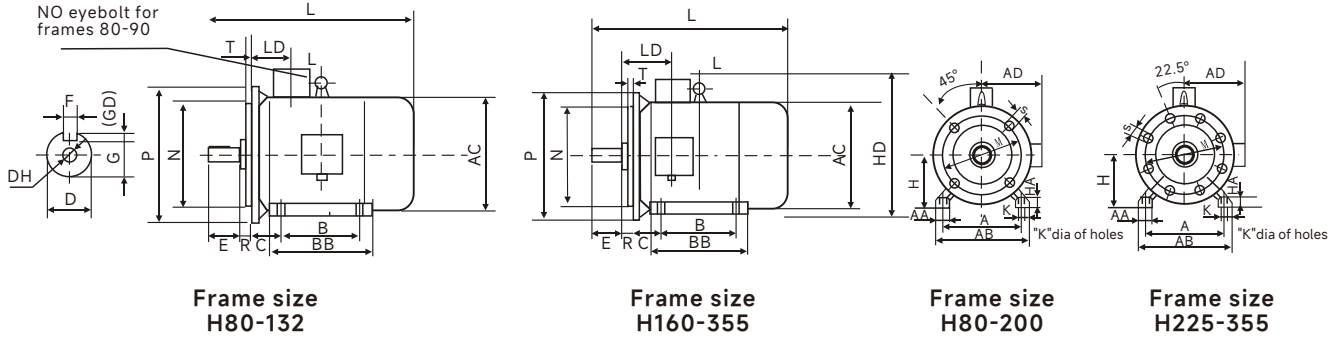
Frame size
H80-355

Type	Poles	Dimensions in mm																			
		A	AA	B	C	D*	E	F	G	H	K	AB	AC	AD	HD	L		BB	HA	LD	(DH)*
TYP1-80	2, 4, 6, 8	125	34	100	50	19	40	6	15.5	80	10	165	167	165	245	300	405	142	10	74	M6×16
TYP1-90S	2, 4, 6, 8	140	36	100	56	24	50	8	20	90	10	180	190	175	265	355	455	180	12	76	M8×19
TYP1-90L	2, 4, 6, 8	140	36	125	56	24	50	8	20	90	10	180	190	175	265	385	485	220	12	76	M8×19
TYP1-100L	2, 4, 6, 8	160	40	140	63	28	60	8	24	100	12	205	215	200	290	435	535	233	14	83	M10×22
TYP1-112M	2, 4, 6, 8	190	45	140	70	28	60	8	24	112	12	230	240	220	325	468	566	248	15	87	M10×22
TYP1-132S	2, 4, 6, 8	216	55	140	89	38	80	10	33	132	12	270	275	240	365	510	587	230	18	102	M12×28
TYP1-132M	2, 4, 6, 8	216	55	178	89	38	80	10	33	132	12	270	275	240	365	548	625	262	18	102	M12×28
TYP1-160M	2, 4, 6, 8	254	65	210	108	42	110	12	37	160	14.5	320	320	285	440	675	740	304	20	149	M16×36
TYP1-160L	2, 4, 6, 8	254	65	254	108	42	110	12	37	160	14.5	320	320	285	440	705	770	334	20	149	M16×36
TYP1-180M	2, 4, 6, 8	279	70	241	121	48	110	14	42.5	180	14.5	355	380	310	470	740	815	355	22	161	M16×36
TYP1-180L	2, 4, 6, 8	279	70	279	121	48	110	14	42.5	180	14.5	355	380	310	470	788	895	397	22	161	M16×36
TYP1-200L	2, 4, 6, 8, 10	318	70	305	133	55	110	16	49	200	18.5	395	410	335	525	785	870	375	25	186	M20×42
TYP1-225S	4, 6, 8, 10	356	75	286	149	60	140	18	53	225	18.5	435	470	370	580	830	900	370	28	189	M20×42
TYP1-225M	2	356	75	311	149	55	110	16	49	225	18.5	435	470	370	580	825	895	395	28	189	M20×42
	4, 6, 8, 10	356	75	311	149	60	140	18	53	225	18.5	435	470	370	580	855	925	395	28	189	M20×42
TYP1-250M	2	406	80	349	168	60	140	18	53	250	24	490	490	380	635	930	1105	445	30	207	M20×42
	4, 6, 8, 10	406	80	349	168	65	140	18	58	250	24	490	490	380	635	930	1105	445	30	207	M20×42
TYP1-280S	2	457	85	368	190	65	140	18	58	280	24	550	580	410	698	981	1150	490	35	215	M20×42
	4, 6, 8, 10	457	85	368	190	75	140	20	67.5	280	24	550	580	410	698	981	1150	490	35	215	M20×42
TYP1-280M	2	457	85	419	190	65	140	18	58	280	24	550	580	410	698	1032	1205	540	35	215	M20×42
	4, 6, 8, 10	457	85	419	190	75	140	20	67.5	280	24	550	580	410	698	1032	1205	540	35	215	M20×42
TYP1-315S	2	508	120	406	216	65	140	18	58	315	28	630	645	535	885	1200	1310	570	45	257	M20×42
	4, 6, 8, 10	508	120	406	216	80	170	22	71	315	28	630	645	535	885	1230	1340	570	45	257	M20×42
TYP1-315M	2	508	120	457	216	65	140	18	58	315	28	630	645	535	885	1310	1420	680	45	257	M20×42
	4, 6, 8, 10	508	120	457	216	80	170	22	71	315	28	630	645	535	885	1340	1450	680	45	257	M20×42
TYP1-315L1	2	508	120	508	216	65	140	18	58	315	28	630	645	535	885	1310	1420	680	45	257	M20×42
	4, 6, 8, 10	508	120	508	216	80	170	22	71	315	28	630	645	535	885	1340	1450	680	45	257	M20×42
TYP1-315L2	2	508	120	508	216	65	140	18	58	315	28	630	645	535	885	1460	1570	830	45	257	M20×42
	4	508	120	508	216	80	170	22	71	315	28	630	645	535	885	1490	1600	830	45	257	M20×42
TYP1-355M	2	610	120	560	254	75	140	20	67.5	355	28	730	720	650	1065	1495	1655	760	52	284	M20×42
	4, 6, 8, 10	610	120	560	254	95	170	25	86	355	28	730	720	650	1065	1525	1600	760	52	284	M24×47
TYP1-355L	2	610	120	630	254	75	140	20	67.5	355	28	730	720	650	1065	1495	1655	760	52	284	M20×42
	4, 6, 8, 10	610	120	630	254	95	170	25	86	355	28	730	720	650	1065	1525	1600	760	52	284	M24×47
TYP1-355L2	6	610	120	630	254	95	170	25	86	355	28	730	720	650	1065	1735	1895	760	52	284	M24×47

Notes: 1) Dimension R is the distance from the flange mounting surface to the auxiliary shoulder.

Installation and dimensions

IM B35 H80-355



Type	Flange NO.	Poles	Dimensions in mm																										
			A	AA	B	C	D*	E	F	G	H	K	AB	AC	AD	HD	L		BB	HA	LD	Flange holes	M	N*	P	R*	S	T	(DH)*
			IC411		IC418																								
TYP1-80	FF165	2, 4, 6, 8	125	34	100	50	19	40	6	15.5	80	10	165	167	165	245	300	405	142	10	74	4	165	130	200	0	12	3.5	M6×16
TYP1-90S	FF165	2, 4, 6, 8	140	36	100	56	24	50	8	20	90	10	180	190	175	265	355	455	180	12	76	4	165	130	200	0	12	3.5	M8×19
TYP1-90L	FF165	2, 4, 6, 8	140	36	125	56	24	50	8	20	90	10	180	190	175	265	385	485	220	12	76	4	165	130	200	0	12	3.5	M8×19
TYP1-100L	FF215	2, 4, 6, 8	160	40	140	63	28	60	8	24	100	12	205	215	200	290	435	535	233	14	83	4	215	180	250	0	14.5	4	M10×22
TYP1-112M	FF215	2, 4, 6, 8	190	45	140	70	28	60	8	24	112	12	230	240	220	325	468	566	248	15	87	4	215	180	250	0	14.5	4	M10×22
TYP1-132S	FF265	2, 4, 6, 8	216	55	140	89	38	80	10	33	132	12	270	275	240	365	510	587	230	18	102	4	265	230	300	0	14.5	4	M12×28
TYP1-132M	FF265	2, 4, 6, 8	216	55	178	89	38	80	10	33	132	12	270	275	240	365	548	625	262	18	102	4	265	230	300	0	14.5	4	M12×28
TYP1-160M	FF300	2, 4, 6, 8	254	65	210	108	42	110	12	37	160	14.5	320	320	285	440	675	740	304	20	149	4	300	250	350	0	18.5	5	M16×36
TYP1-160L	FF300	2, 4, 6, 8	254	65	254	108	42	110	12	37	160	14.5	320	320	285	440	705	770	334	20	149	4	300	250	350	0	18.5	5	M16×36
TYP1-180M	FF300	2, 4, 6, 8	279	70	241	121	48	110	14	42.5	180	14.5	355	380	310	470	740	815	355	22	161	4	300	250	350	0	18.5	5	M16×36
TYP1-180L	FF300	2, 4, 6, 8	279	70	279	121	48	110	14	42.5	180	14.5	355	380	310	470	788	895	397	22	161	4	300	250	350	0	18.5	5	M16×36
TYP1-200L	FF350	2, 4, 6, 8, 10	318	70	305	133	55	110	16	49	200	18.5	395	410	335	525	785	870	375	25	186	4	350	300	400	0	18.5	5	M20×42
TYP1-225S	FF400	4, 6, 8, 10	356	75	286	149	60	140	18	53	225	18.5	435	470	370	580	830	900	370	28	189	8	400	350	450	0	18.5	5	M20×42
TYP1-225M	FF400	2	356	75	311	149	55	110	16	49	225	18.5	435	470	370	580	825	895	395	28	189	8	400	350	450	0	18.5	5	M20×42
TYP1-250M	FF500	4, 6, 8, 10	406	80	349	168	60	140	18	53	250	18.5	435	470	370	580	855	925	395	28	189	8	400	350	450	0	18.5	5	M20×42
TYP1-250M	FF500	2	406	80	349	168	65	140	18	58	250	24	490	490	380	635	930	1105	445	30	207	8	500	450	550	0	18.5	5	M20×42
TYP1-280S	FF500	4, 6, 8, 10	457	85	368	190	65	140	18	58	280	24	550	580	410	698	981	1150	490	35	215	8	500	450	550	0	18.5	5	M20×42
TYP1-280M	FF500	2	457	85	419	190	65	140	18	58	280	24	550	580	410	698	1032	1205	540	35	215	8	500	450	550	0	18.5	5	M20×42
TYP1-280M	FF500	4, 6, 8, 10	457	85	419	190	75	140	20	67.5	280	24	550	580	410	698	1032	1205	540	35	215	8	500	450	550	0	18.5	5	M20×42
TYP1-315S	FF600	2	508	120	406	216	65	140	18	58	315	28	630	645	535	885	1200	1310	570	45	257	8	600	550	660	0	24	6	M20×42
TYP1-315S	FF600	4, 6, 8, 10	508	120	406	216	80	170	22	71	315	28	630	645	535	885	1230	1340	570	45	257	8	600	550	660	0	24	6	M20×42
TYP1-315M	FF600	2	508	120	457	216	65	140	18	58	315	28	630	645	535	885	1310	1420	680	45	257	8	600	550	660	0	24	6	M20×42
TYP1-315M	FF600	4, 6, 8, 10	508	120	457	216	80	170	22	71	315	28	630	645	535	885	1340	1450	680	45	257	8	600	550	660	0	24	6	M20×42
TYP1-315L1	FF600	2	508	120	508	216	65	140	18	58	315	28	630	645	535	885	1310	1420	680	45	257	8	600	550	660	0	24	6	M20×42
TYP1-315L1	FF600	4, 6, 8, 10	508	120	508	216	80	170	22	71	315	28	630	645	535	885	1340	1450	680	45	257	8	600	550	660	0	24	6	M20×42
TYP1-315L2	FF600	2	508	120	508	216	65	140	18	58	315	28	630	645	535	885	1460	1570	680	45	257	8	600	550	660	0	24	6	M20×42
TYP1-315L2	FF600	4	508	120	508	216	80	170	22	71	315	28	630	645	535	885	1490	1600	680	45	257	8	600	550	660	0	24	6	M20×42
TYP1-355M	FF740	2	610	120	560	254	75	140	20	67.5	355	28	730	720	650	1065	1495	1655	760	52	284	8	600	680	800	0	24	6	M20×42
TYP1-355M	FF740	4, 6, 8, 10	610	120	560	254	95	170	25	86	355	28	730	720	650	1065	1525	1600	760	52	284	8	740	680	800	0	24	6	M24×47
TYP1-355L	FF740	2	610	120	630	254	75	140	20	67.5	355	28	730	720	650	1065	1495	1655	760	52	284	8	740	680	800	0	24	6	M20×42
TYP1-355L	FF740	4, 6, 8, 10	610	120	630	254	95	170	25	86	355	28	730	720	650	1065	1525	1600	760	52	284	8	740	680	800	0	24	6	M24×47
TYP1-355L2	FF741	6	610	120	630	254	95	170	25	86	355	28	730	720	650	1065	1735	1895	760	52	284	8	740	680	800	0	24	6	M24×47

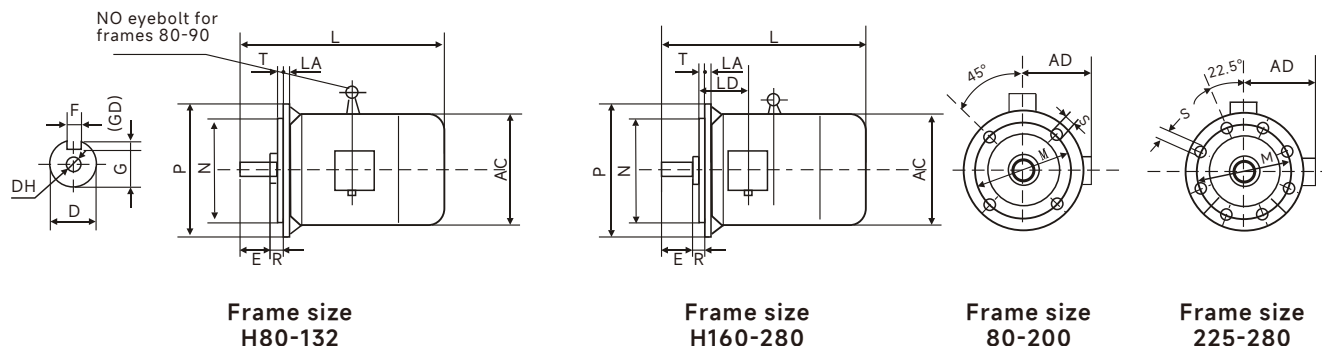
Notes: 1) Dimension R is the distance from the flange mounting surface to the auxiliary shoulder.

2) Dimension D Tolerance: φ 19-28: j6; φ 38-48: K6; φ 55-80: m6; φ 95: m6

3) Dimension N Tolerance: j6

Installation and dimensions

IMB5 H80-280



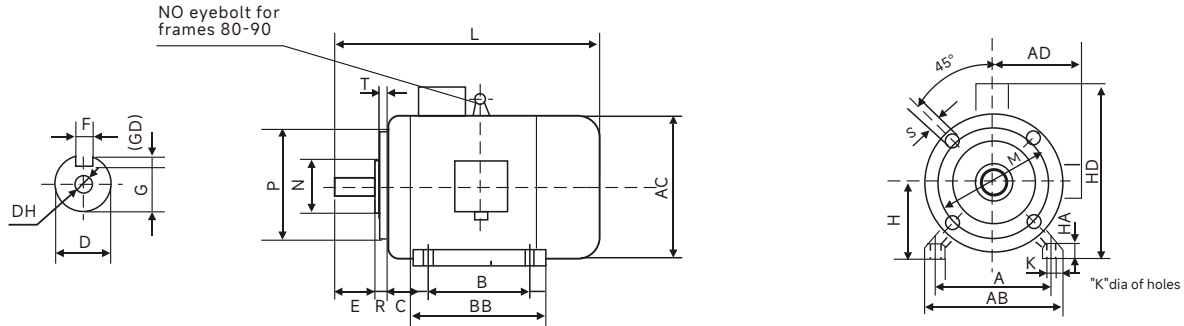
Type	Flange NO.	Poles	Dimensions in mm																
			D*	E	F	G	M	N*	P	S	T	Flange holes	AC	L		LD	LA	(DH)*	R
			IC411	IC416															
TYP1-80	FF105	2, 4, 6, 8	19	40	6	15.5	165	130	200	12	3.5	4	167	300	405	74	12	M6×16	0
TYP1-90S	FF165	2, 4, 6, 8	24	50	8	20	165	130	200	12	3.5	4	190	355	455	76	12	M8×19	0
TYP1-90L	FF165	2, 4, 6, 8	24	50	8	20	165	130	200	12	3.5	4	190	385	485	76	12	M8×19	0
TYP1-100L	FF215	2, 4, 6, 8	28	60	8	24	215	180	250	14.5	4	4	215	435	535	83	13	M10×22	0
TYP1-112M	FF215	2, 4, 6, 8	28	60	8	24	215	180	250	14.5	4	4	240	468	566	87	14	M10×22	0
TYP1-132S	FF265	2, 4, 6, 8	38	80	10	33	265	230	300	14.5	4	4	275	510	587	102	14	M12×28	0
TYP1-132M	FF265	2, 4, 6, 8	38	80	10	33	265	230	300	14.5	4	4	275	548	625	102	14	M12×28	0
TYP1-160M	FF300	2, 4, 6, 8	42	110	12	37	300	250	350	18.5	5	4	320	675	740	149	15	M16×36	0
TYP1-160L	FF300	2, 4, 6, 8	42	110	12	37	300	250	350	18.5	5	4	320	705	770	149	15	M16×36	0
TYP1-180M	FF300	2, 4, 6, 8	48	110	14	42.5	300	250	350	18.5	5	4	380	740	815	161	15	M16×36	0
TYP1-180L	FF300	2, 4, 6, 8	48	110	14	42.5	300	250	350	18.5	5	4	380	788	895	161	15	M16×36	0
TYP1-200L	FF350	2, 4, 6, 8, 10	55	110	16	49	350	300	400	18.5	5	4	410	785	870	186	17	M20×42	0
TYP1-225S	FF400	4, 6, 8, 10	60	140	18	53	400	350	450	18.5	5	8	470	830	900	189	20	M20×42	0
TYP1-225M	FF400	2	55	110	16	49	400	350	450	18.5	5	8	470	825	895	189	20	M20×42	0
	FF400	4, 6	60	140	18	53	400	350	450	18.5	5	8	470	855	925	189	20	M20×42	0
TYP1-250M	FF500	2	60	140	18	53	500	450	550	18.5	5	8	490	930	1105	207	22	M20×42	0
	FF500	4, 6, 8, 10	65	140	18	58	500	450	550	18.5	5	8	490	930	1105	207	22	M20×42	0
TYP1-280S	FF500	2	65	140	18	58	500	450	550	18.5	5	8	580	981	1150	215	22	M20×42	0
	FF500	4, 6, 8, 10	75	140	20	67.5	500	450	550	18.5	5	8	580	981	1150	215	22	M20×42	0
TYP1-280M	FF500	2	65	140	18	58	500	450	550	18.5	5	8	580	1032	1205	215	22	M20×42	0
	FF500	4, 6, 8, 10	75	140	20	67.5	500	450	550	18.5	5	8	580	1032	1205	215	22	M20×42	0

Notes: 1) Dimension R is the distance from the flange mounting surface to the auxiliary shoulder.

2) Dimension D Tolerance: $\phi 19-28$: j6; $\phi 38-48$: K6; $\phi 55-80$: m6; $\phi 95$: m6

Installation and dimensions

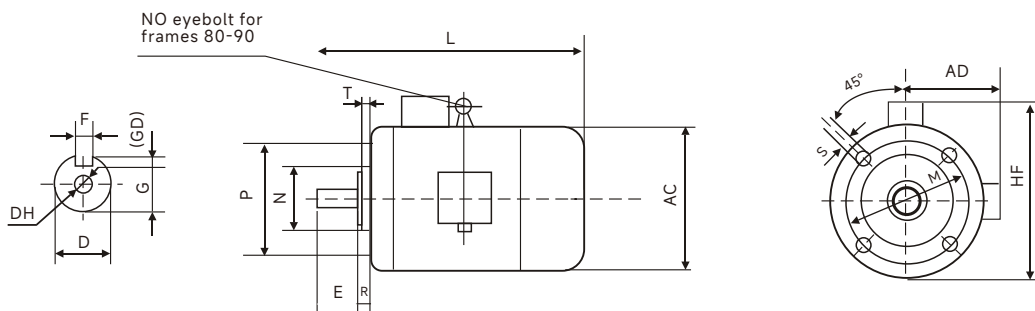
IMB34 H80-112



Type	Poles	Mounting Dimensions														Flange holes	Overall Dimensions							
		A	B	C	D*	E	F	G	H	K	M	N*	P	R	S		T	AB	AC	AD	HD	L		(DH)*
TYP1-80	2, 4, 6, 8	125	100	50	19	40	6	15.5	80	10	100	80	120	0	M6	3.0	4	165	167	165	245	300	405	M6×16
TYP1-90S	2, 4, 6, 8	140	100	56	24	50	8	20	90	10	115	95	140	0	M8	3.0	4	180	190	175	250	355	455	M8×19
TYP1-90L	2, 4, 6, 8	140	125	56	24	50	8	20	90	10	115	95	140	0	M8	3.0	4	180	190	175	250	385	485	M8×19
TYP1-100L	2, 4, 6, 8	160	140	63	28	60	8	24	100	12	130	110	160	0	M8	3.5	4	205	215	200	270	435	535	M10×22
TYP1-112M	2, 4, 6, 8	190	140	70	28	60	8	24	112	12	130	110	160	0	M8	3.5	4	230	240	220	325	468	566	M10×22

Notes:1)Dimension N Tolerance: j6

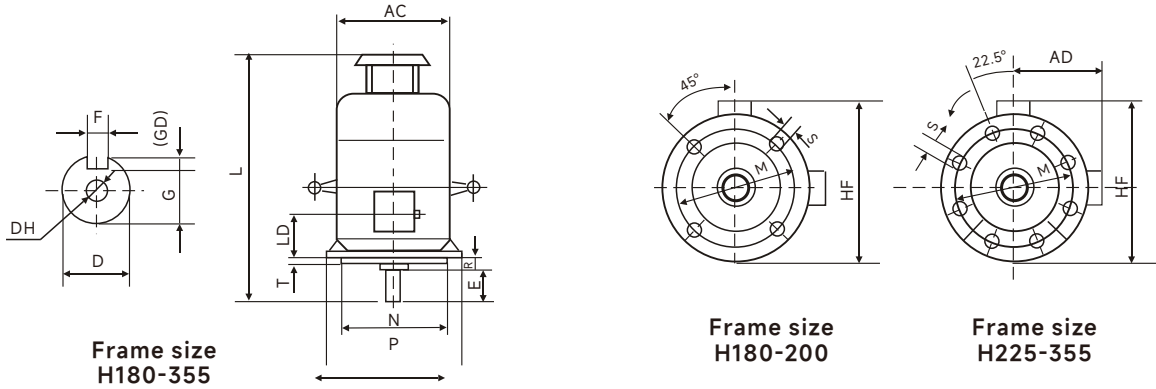
IMB14 H80-112



Type	Poles	Mounting Dimensions										Flange holes	Overall Dimensions					
		D*	E	F	G	P	M	N	R	S	T		AD	AC	HF	L		(DH)*
TYP1-80	2, 4, 6, 8	19	40	6	15.5	120	100	80	0	M6	3.0	4	165	167	230	300	405	M6×16
TYP1-90S	2, 4, 6, 8	24	50	8	20	140	115	95	0	M8	3.0	4	175	190	245	355	455	M8×19
TYP1-90L	2, 4, 6, 8	24	50	8	20	140	115	95	0	M8	3.0	4	175	190	245	385	485	M8×19
TYP1-100L	2, 4, 6, 8	28	60	8	24	160	130	110	0	M8	3.5	4	200	215	285	435	535	M10×22
TYP1-112M	2, 4, 6, 8	28	60	8	24	160	130	110	0	M8	3.5	4	220	240	320	468	566	M10×22

Installation and dimensions

IMV1 H180-355



Type	Poles	Mounting Dimensions										Flange holes	Overall Dimensions					
		D*	E	F	G	M	N*	P	R	S	T		AC	AD	HF	L		(DH)*
															IC411	IC416		
TYP1-180M	2, 4, 6, 8	48	110	14	42.5	300	250	350	0	18.5	5	4	380	310	500	800	905	M16×36
TYP1-180L	2, 4, 6, 8	48	110	14	42.5	300	250	350	0	18.5	5	4	380	310	500	848	955	M16×36
TYP1-200L	2, 4, 6, 8, 10	55	110	16	49	350	300	400	0	18.5	5	4	410	335	540	855	950	M20×42
TYP1-225S	4, 6, 8, 10	60	140	18	53	400	350	450	0	18.5	5	8	470	370	605	925	1005	M20×42
TYP1-225M	2	55	140	16	49	400	350	450	0	18.5	5	8	470	370	605	920	1000	M20×42
	4, 6, 8, 10	60	140	18	53	400	350	450	0	18.5	5	8	470	370	605	950	1030	M20×42
TYP1-250M	2	60	140	18	53	500	450	550	0	18.5	5	8	490	380	630	1035	1210	M20×42
	4, 6, 8, 10	65	140	18	58	500	450	550	0	18.5	5	8	490	380	630	1035	1210	M20×42
TYP1-280S	2	65	140	18	58	500	450	550	0	18.5	5	8	580	410	700	1115	1285	M20×42
	4, 6, 8, 10	75	140	20	67.5	500	450	550	0	18.5	5	8	580	410	700	1115	1285	M20×42
TYP1-280M	2	65	140	18	58	500	450	550	0	18.5	5	8	580	410	700	1157	1330	M20×42
	4, 6, 8, 10	75	140	20	67.5	500	450	550	0	18.5	5	8	580	410	700	1157	1330	M20×42
TYP1-315S	2	65	140	18	58	600	550	660	0	24	6	8	645	535	858	1325	1435	M20×42
	4, 6, 8, 10	80	170	22	71	600	550	660	0	24	6	8	645	535	858	1355	1465	M20×42
TYP1-315M	2	65	140	18	58	600	550	660	0	24	6	8	645	535	858	1440	1550	M20×42
	4, 6, 8, 10	80	170	22	71	600	550	660	0	24	6	8	645	535	858	1465	1575	M20×42
TYP1-315L1	2	65	140	18	58	600	550	660	0	24	6	8	645	535	858	1440	1550	M20×42
	4, 6, 8, 10	80	170	22	71	600	550	660	0	24	6	8	645	535	858	1465	1575	M20×42
TYP1-315L2	2	65	140	18	58	600	550	660	0	24	6	8	645	535	858	1580	1690	M20×42
	4	80	170	22	71	600	550	660	0	24	6	8	645	535	858	1615	1725	M20×42
TYP1-355M	2	75	140	20	67.5	740	680	800	0	24	6	8	720	650	1010	1640	1800	M20×42
	4, 6, 8, 10	95	170	25	86	740	680	800	0	24	6	8	720	650	1010	1670	1830	M20×42
TYP1-355L	2	75	140	20	67.5	740	680	800	0	24	6	8	720	650	1010	1640	1800	M20×42
	4, 6, 8, 10	95	170	25	86	740	680	800	0	24	6	8	720	650	1010	1670	1830	M24×47
TYP1-355L2	4, 6, 8, 10	95	170	25	86	740	680	800	0	24	6	8	720	650	1010	1880	2040	M24×47

Notes: 1) Dimension R is the distance from the flange mounting surface to the auxiliary shoulder.

2) Dimension D Tolerance: $\phi 19-28$: j6; $\phi 38-48$: K6; $\phi 55-80$: m6; $\phi 95$: m6

StellarSpace

Ver. No.: 2026-V1.0



Website QR Code



WeChat Official Account

StellarSpace

StellarSpace (Shenzhen) Automation Technology Co., Ltd.

📍 Room 6, No. 1421, Wuzhong Avenue, Wuzhong District, Suzhou City, Jiangsu Province

☎ Consultation Hotline: +86 400 888 5476